



Alpha 358 with two seal loading modules and two crimping presses



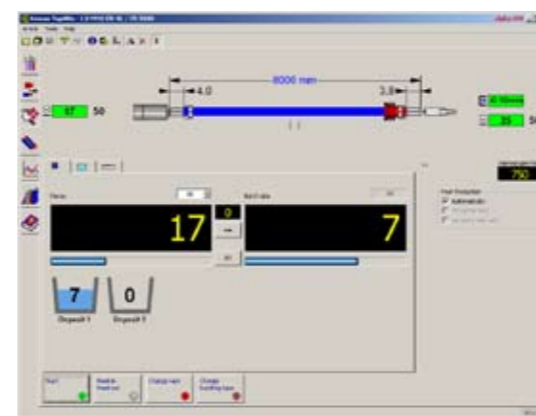
mci 712 crimping module



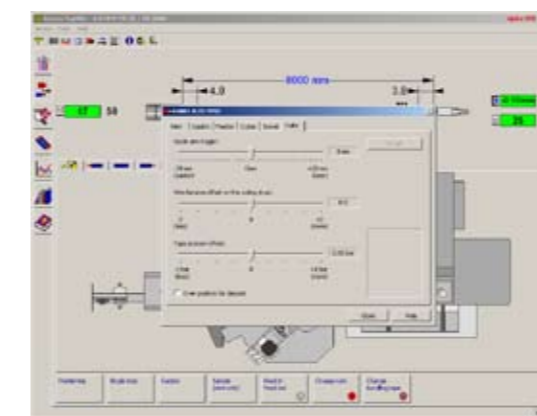
mci 722 crimping module with programmable crimp height



mci 765 seal loading module with seal position monitoring (SPM)



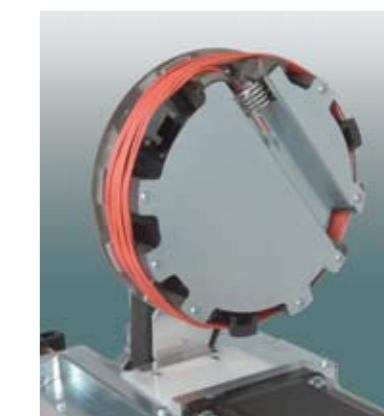
Clear, straightforward production menu



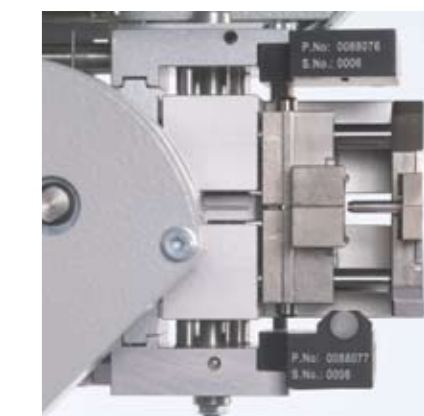
Simple fine-adjustment function in the TopWin user interface



Komax 341 crimp height measuring device



Wire coiler



Seal position monitoring (SPM)

## Processing Long Wires in the Smallest of Spaces Alpha 358

*Wires up to 25 meters (985 inches) in length can now be processed at high speed on a machine just four meters (158 inches) in length.*

*The Alpha 358 fully automatic crimping machine sets a new standard in the processing of long wires.*

*Coiling and binding wires directly on the fully automatic crimping machine frees up substantial space and offers considerable quality advantages.*

### Area of application

The Alpha 358 is designed for two-sided crimping and seal loading of long wires.

Fitted with an ingenious coiling and binding system, this machine no longer needs the lengthy deposit units.

### Increased productivity

The coiler is fully integrated into the machine. The coiling process is optimized to the material being processed in order to maximize the output. With its controlled processes, the coiler ensures perfectly coiled wires even at the highest processing speeds. The coiled wires are bound individually with easily removable tape and then suspended in the machine by batch for simple removal.

This approach eliminates the time-consuming tasks of hanging up and removing the wires at the assembly board. In the process, the risk of damaging the wire ends during handling is minimized.

In addition, a maximum amount of time can be saved in the further processing of the wire. While one job is being produced on the machine, preparations for the next jobs can be largely completed using the TopWin user software. Downtimes can be reduced to a minimum by integrating the quality measuring instruments into the process sequence and by using the automatic guide tube changer.

### Quality monitoring

The coiler speed is synchronized with the wire drive while the tension on the conductor is constantly monitored. Gentle coiling is therefore guaranteed. Crimp-height and pull-out force measurements are integrated in the process sequence. The results from the measuring devices are transferred automatically to the user software and compared with the pre-set values to avoid incorrect entries. Production cannot be started until the measured results match the specified values. With the optional barcode scanner the material can be scanned prior to the start of production and compared

with the specified values. This step prevents material from getting mixed up with each other. The processes are constantly monitored during production. Any wires with processing defects are removed and an appropriate number of cables are post-processed automatically to replace them.

### mci 712/722 crimping module

Presses with integrated crimp force monitoring for crimping forces up to 20kN.

- Just one teach crimp required
- Creep speed (slow motion) and other key functions can be controlled right at the press.
- Split cycle function
- Programmable stroke
- Crimp tool mount with quick-change system
- The mci 722 crimp press also features programmable crimp height adjustment.

### mci 762/765 seal module

Modules with integrated seal monitoring

- The most important functions can be operated directly at the module
- Quick-release locks for all seal-dependent application parts
- Existing applications can be used.
- mci 765 seal module for automatic setup and SPM seal position monitoring

### TopWin

The TopWin graphical user interface is designed for quick and simple data input. With its easy-to-understand structure, users are able to master the machine in no time at all. All relevant parameters can be

entered and saved conveniently.

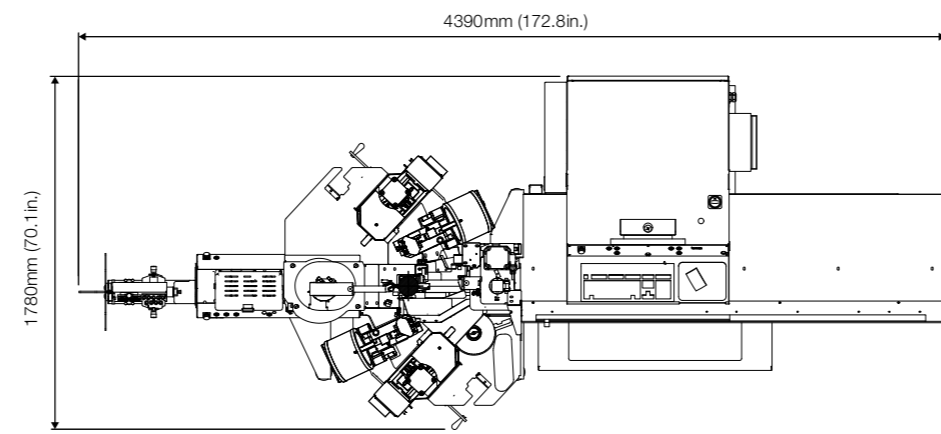
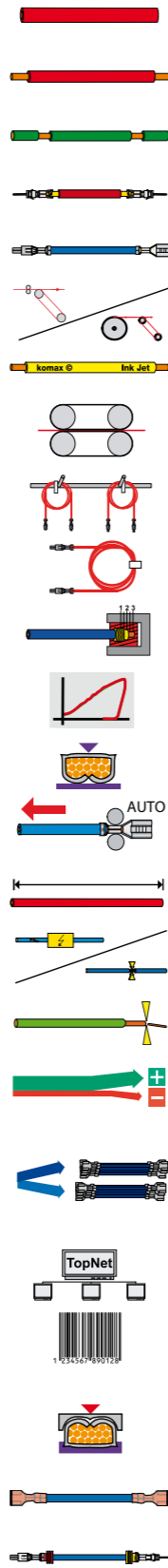
User tips are presented clearly in graphics. Access rights to all important input parameters can be managed with a permission editor. The optional interface, the WPCS (Wire Processing Communication Standard), allows Komax machines to be networked and easily integrated into existing production processes. The supplemental TopNet networking software assures optimum production management.



Binding and removal unit

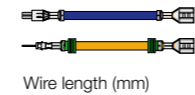
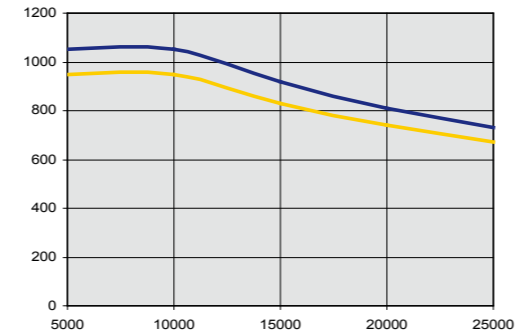


Wire deposition



Height with cover closed: 1700mm (66.9in.)  
Height with cover open: 2154mm (84.8in.)

Reference values for piece output of Alpha 358  
Pcs/h



Conductor FLRY 1.0mm<sup>2</sup> (AWG17)  
Pneumatic pressure 6bar (87psi)  
Speed 10m/s (33ft/s)  
Acceleration 50m/s<sup>2</sup> (164ft/s<sup>2</sup>)  
Crimping modules mci 722  
Seal loading modules mci 762  
Quality monitoring active

Conductor length/conductor diameter  
Maximum length [m]



### Your benefits

- Ultra-easy processing of long wires
- No risk of damaged contact parts, even with long wires
- Requires minimal floor space
- High production output

### Technical data

Length range 2500mm–25000mm (98in.–82ft.)  
Length accuracy Repeat accuracy ±(0.2%+1mm (0.039in.))  
Stripping lengths 0.1–25mm (0.004in.–0.98in.)  
Stripping lengths with partial pull-off two-sided 35mm (1.38in.)  
Wire cross sections\* 0.22–6mm<sup>2</sup> (AWG24–AWG10)  
Wire draw-in speed max.10m/s (33ft/s)  
Noise level <75dB (without crimp module)  
Electrical connection 3×208–480V/50–60Hz 5kVA  
Pneumatic pressure 5–8bar (73–116psi)  
Weight 9m<sup>3</sup>/h (318ft<sup>3</sup>/h)  
Weight Approx. 1300kg (2866lb.)  
Dimensions (W×H×D) 4390mm×1780mm×1700mm (2154mm)  
172.8in.×70.1in.×70in. (84.8in.)

\* Certain extremely hard, tough wires may not be able to be processed even if they are within the indicated cross section range. In case of doubt, we are happy to produce samples of your wires.

### Accessories

The Alpha 358 can be customized with various accessories to meet specific customer needs.

- Preliminary processing of wires**
- Inkjet marking
  - Continuous wire feed
  - Standard straightening unit/manual cable selector
- Measuring devices**
- Crimp height measurement
  - Pull-out force measurement
- Crimp module accessories**
- Terminal feed with paper take-up unit
  - Terminal strip chopper (chopper)
- Process monitoring**
- Crimp force monitoring
  - Seal monitoring
  - Splice monitoring
  - Wire end detection
- Other accessories**
- Automatic guide tube changer

### Services

Komax also offers optimum after-sales support.

- Installation
- Production assistance
- Training for different levels of users
- Worldwide customer service network with seamless supply of spare parts



Subject to change /gu

0306111 Version 0

CC2 Alpha 358



## Long Wire Specialist Alpha 358